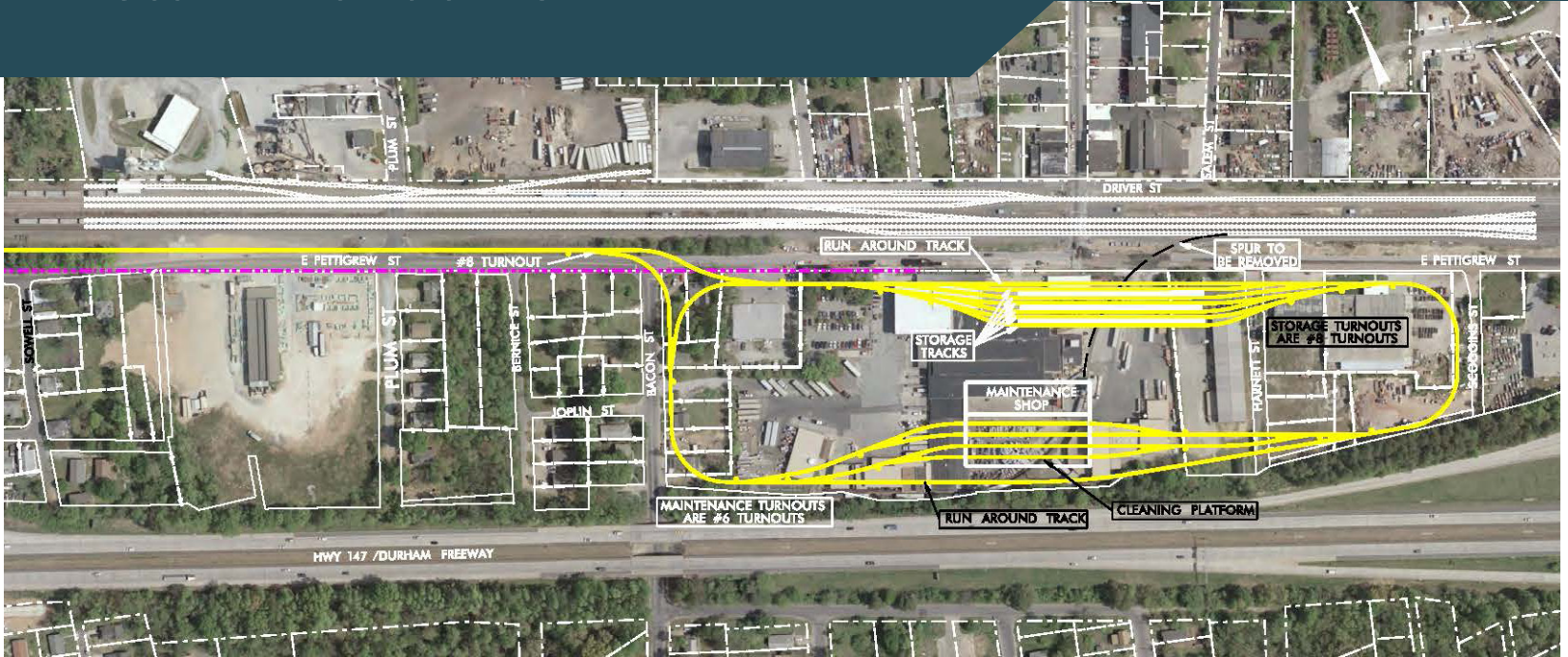


RAIL OPERATIONS AND MAINTENANCE FACILITY

Alston Avenue ROMF



FAST FACTS

Size: 19 Acres
Zoning: Industrial, Light
Current Land Use: Commercial, Commercial/Warehouse, Railroad, Residential, Vacant
Current Employment Served: 150-250 employees

DEMOGRAPHICS

Minority Population (%)	94%
Population Below Poverty	48%
Zero Car Households	50%
Limited English Proficiency	5%

IMPACTS TO NATURAL RESOURCES

Total Acres of Biotic Resources:	19
Bottomland:	0
Alluvial:	0
Mesic Mixed:	0
Maintained/Disturbed:	19
Protected Species:	0
Streams:	0
Riparian Zone 1 [sq. ft. (acres)]:	0
Riparian Zone 2 [sq. ft. (acres)]:	0
Wetlands [# (acres)]:	0
Ponds [# (acres)]:	0
Floodplain [100-Year (acres)]:	0
Floodway (acres):	0

IMPACTS TO AREA ECONOMICS

Full Acquisitions:	19
Partial Acquisitions:	0
Existing Jobs:	150-250
Hazardous, Contaminated & Regulated Materials	
High Risk Sites:	2
Medium Risk Sites:	8

IMPACTS TO COMMUNITY RESOURCES

Visual and Aesthetic:	Low impact
Noise:	No Impacts
Vibration:	No Impacts
Community Resources:	No Impacts
Acres of Parklands:	No Impacts
Recreational Trails:	No Impacts
Historic Resources:	TBD
Archaeological Sites:	No Impacts



CAPITAL COST (2015 Dollars): \$95-110 Million Dollars

Evaluation Results and Costs are subject to change.