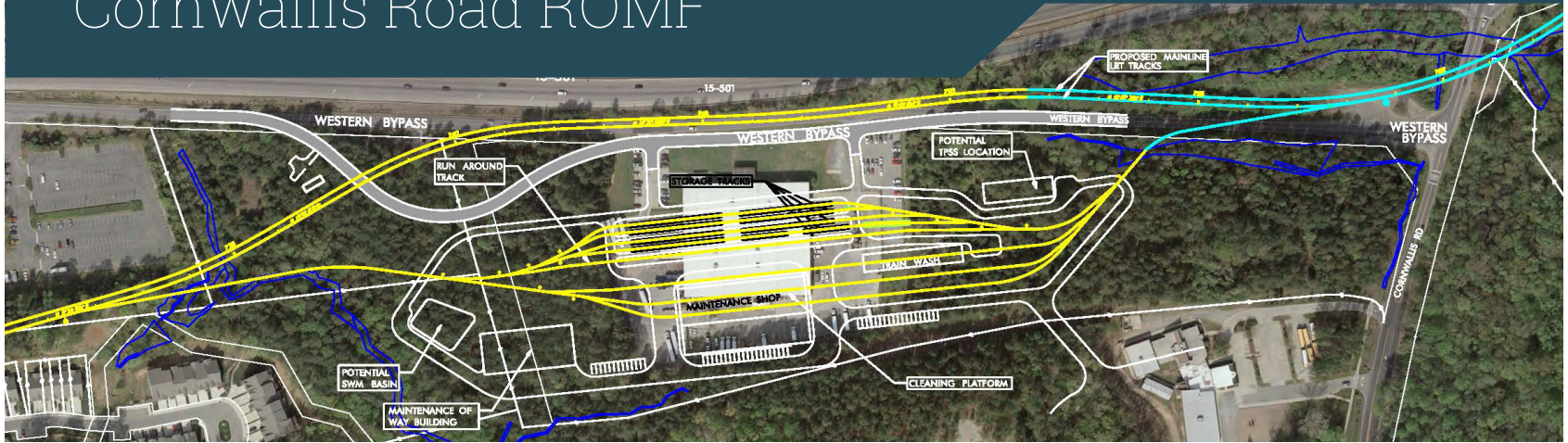


# RAIL OPERATIONS AND MAINTENANCE FACILITY (ROMF)

## Cornwallis Road ROMF



### FAST FACTS

**Size:** 20 Acres  
**Zoning:** Commercial General  
**Current Land Use:** Commercial / Warehouse, Vacant  
**Current Employment Served:** Less than 25 employees

### DEMOGRAPHICS

Minority Population (%)	55%
Population Below Poverty	24%
Zero Car Households	12%
Limited English Proficiency	16%

### IMPACTS TO NATURAL RESOURCES

Total Acres of Biotic Resources:	20
Bottomland:	0
Alluvial:	1
Mesic Mixed:	12
Maintained/Disturbed:	7
Protected Species:	0
Streams:	154
Riparian Zone 1 (acres):	(0)
Riparian Zone 2 (acres):	(0.03)
Wetlands [# (acres)]:	1 (0.1)
Ponds [# (acres)]:	0
Floodplain [100-Year (acres)]:	0.1
Floodway (acres):	0.2

### IMPACTS TO AREA ECONOMICS

Full Acquisitions:	1
Partial Acquisitions:	0
Existing Jobs:	Fewer than 25
Hazardous, Contaminated & Regulated Materials High Risk Sites:	0
Hazardous, Contaminated & Regulated Materials Medium Risk Sites:	1

### IMPACTS TO COMMUNITY RESOURCES

Visual and Aesthetic:	Moderate-High impact
Noise:	Low/No Impacts
Vibration:	Low/No Impacts
Community Resources:	No Impacts
Acres of Parklands:	0
Recreational Trails:	0
Historic Resources:	TBD
Archaeological Sites:	0



**CAPITAL COST (2015 Dollars):** \$65-80 Million Dollars

Evaluation Results and Costs are subject to change.