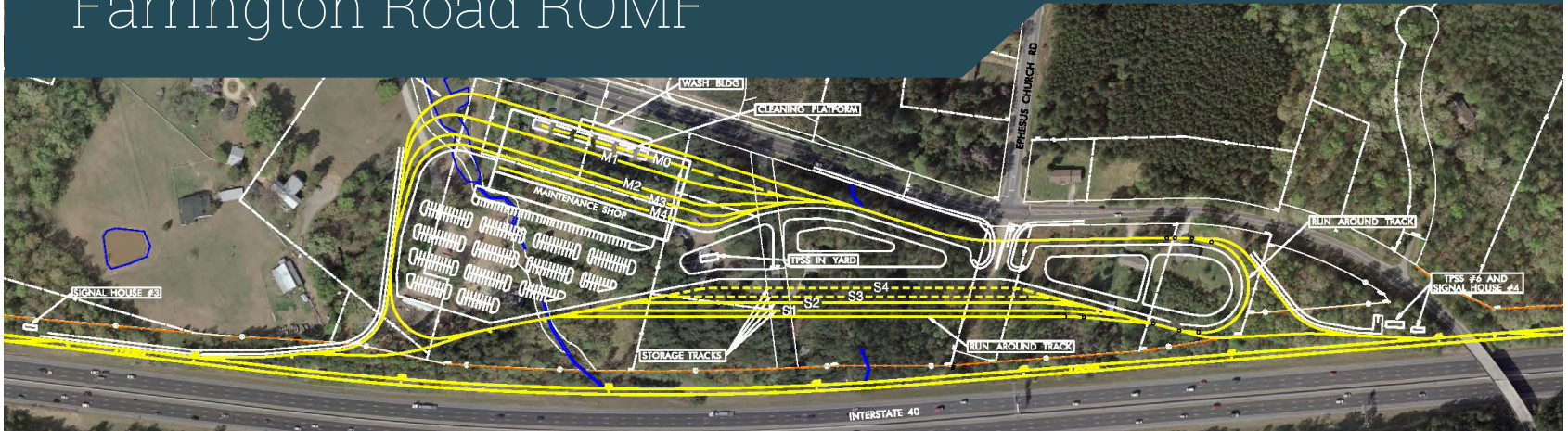


RAIL OPERATIONS AND MAINTENANCE FACILITY (ROMF)

Farrington Road ROMF



FAST FACTS

Size: 25 Acres
Zoning: Residential, Suburban Multi-family
Current Land Use: Residential - single family homes
Current Employment Served: Fewer than 25 employees

DEMOGRAPHICS

Minority Population (%)	29%
Population Below Poverty	15%
Zero Car Households	5%
Limited English Proficiency	5%

IMPACTS TO NATURAL RESOURCES

Total Acres of Biotic Resources:	25
Bottomland:	0
Alluvial:	0
Mesic Mixed:	9
Maintained/Disturbed:	16
Protected Species:	0
Streams:	638
Riparian Zone 1 (acres):	(1.0)
Riparian Zone 2 (acres):	(0.9)
Wetlands [# (acres)]:	1 (0.3)
Ponds [# (acres)]:	0
Floodplain [100-Year (acres)]:	0
Floodway (acres):	0

IMPACTS TO AREA ECONOMICS

Full Acquisitions:	11
Partial Acquisitions:	0
Existing Jobs:	Fewer than 25
Hazardous, Contaminated & Regulated Materials High Risk Sites:	0
Hazardous, Contaminated & Regulated Materials Medium Risk Sites:	0

IMPACTS TO COMMUNITY RESOURCES

Community Resources:	No Impacts
Historic Resources:	TBD
Visual and Aesthetic:	Low impact
Archaeological Sites:	1
Acres of Parklands:	0
Recreational Trails:	0
Noise:	0
Vibration:	0



CAPITAL COST (2015 Dollars): \$50-65 Million Dollars

Evaluation Results and Costs are subject to change.