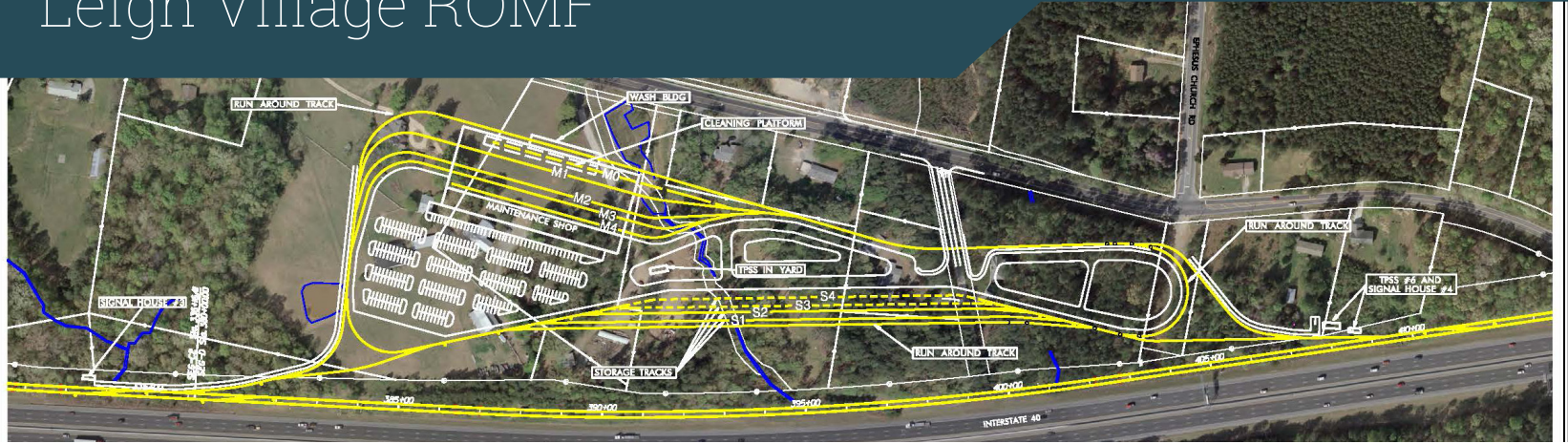


# RAIL OPERATIONS AND MAINTENANCE FACILITY (ROMF)

## Leigh Village ROMF



### FAST FACTS

**Size:** 21 Acres  
**Zoning:** Residential, Suburban Multi-family  
**Current Land Use:** Residential - single family homes  
**Current Employment Served:** Fewer than 25 employees

### DEMOGRAPHICS

Minority Population (%)	29%
Population Below Poverty	15%
Zero Car Households	5%
Limited English Proficiency	5%

### IMPACTS TO NATURAL RESOURCES

Total Acres of Biotic Resources:	21
Bottomland:	0
Alluvial:	0
Mesic Mixed:	17
Maintained/Disturbed:	4
Protected Species:	0
Streams:	587
Riparian Zone 1 (acres):	(0.6)
Riparian Zone 2 (acres):	(0.5)
Wetlands [# (acres)]:	1 (0.2)
Ponds [# (acres)]:	1 (0.2)
Floodplain [100-Year (acres)]:	0
Floodway (acres):	0

### IMPACTS TO AREA ECONOMICS

Full Acquisitions:	5
Partial Acquisitions:	2
Existing Jobs:	Fewer than 25
Hazardous, Contaminated & Regulated Materials High Risk Sites:	0
Hazardous, Contaminated & Regulated Materials Medium Risk Sites:	0

### IMPACTS TO COMMUNITY RESOURCES

Visual and Aesthetic:	Low impact
Noise:	Low/No Impact
Vibration:	Low/No I
Community Resources:	No Impacts
Acres of Parklands:	0
Recreational Trails:	0
Historic Resources:	TBD(1)*
*Likely to have one property designated historic during EIS process	
Archaeological Sites:	1



**CAPITAL COST (2015 Dollars): \$50-65 Million Dollars**

Evaluation Results and Costs are subject to change.